

# Falls Prevention



Palliative care. Living well every day.

🌐 [epc.asn.au](http://epc.asn.au) ☎ 1300 130 813

# Contents

<b>Making your Home Safer</b>	<b>3</b>
<b>Flooring</b>	<b>4</b>
<b>Lighting</b>	<b>4</b>
<b>Stairs &amp; Steps (Indoor &amp; Outdoor)</b>	<b>5</b>
<b>Getting In &amp; Out of the Car</b>	<b>5</b>
<b>Kitchen</b>	<b>6</b>
<b>Bathroom &amp; Toilet</b>	<b>6</b>
<b>Bedroom</b>	<b>7</b>
<b>Lounge Room</b>	<b>7</b>
<b>How to get up safely from the floor</b>	<b>8</b>
<b>What to do if you fall at home</b>	<b>10</b>
<b>References</b>	<b>11</b>
<b>Acknowledgements</b>	<b>11</b>

# Making your Home Safer

**Purpose:** Encourages a safer home environment to help maintain an independent lifestyle.

This booklet provides tips to assist you in making the environment in which you live safer for you or a loved one. Many of the suggestions may involve either a low cost alternative or a suggested change in the way you currently carry out a certain activity. This booklet is intended as a guide only.

You may require assistance from a family member or home handy man in order to make some of the suggested changes. It may be useful to seek the advice of a professional such as your visiting palliative care nurse and/or Occupational Therapist.

An Occupational Therapist can conduct a survey of your home environment in relation to your level of function. They will provide advice regarding modifications and/or equipment aids to maximise safety around the home.



# Flooring

## Indoor

- Remove all loose mats and rugs or ensure they are firmly secured and have slip-resistant backing.
- Replace worn carpets and floor covering.
- Ensure the floors are free from clutter.
- Always wipe spills immediately.
- Ensure cords/cables are secured, either coiled or taped down next to the wall so you don't trip over them. If necessary have an electrician install another power point.

## Outdoor

- Remove and replace uneven paving.
- Keep paths free of moss and leaves.
- Use a hose reel to store your garden hose.
- Store garden tools safely.

# Lighting

- Fluorescent lighting, or globes of 75 watts or higher, are recommended in all rooms, passageways and stairwells (note some light fittings take a maximum of 60 watts).
- It is recommended that lighting should not cause excess glare or throw shadows across the room.
- Sensor lights are good for passages, hallways and entrances.
- It is recommended you have a light you can easily switch on from your bed, for example, a night light or lamp.
- Allow time for your eyes to adjust when walking from light to dark areas and vice versa.
- Stairs may need extra lighting.

# Stairs & Steps

- Hand rails are recommended on at least one side preferably both sides of stairs. Consult an Occupational Therapist for advice on best location. Most councils will provide an installation service at a reduced rate for pensioners.
- Replace or repair damaged stair coverings.
- Keep free from clutter.
- Keep frequently used items in places that are easy to reach and on the same level.
- Minimise the use of stairs as much as possible. If residence is multi storey consider remaining on one floor for the majority of your activity/routine.
- If necessary have someone with you when negotiating stairs.
- Stairs may require extra lighting and it is recommended that switches are accessible at the top and bottom of stairs.

# Getting In & Out of the Car

- Take your time and go slowly, take a rest between house and car if necessary.
- Position any walking aids and yourself or loved one away from where the car door swings.
- If wheelchair bound, a wheelchair taxi can be booked in advance to assist getting to and from any appointments.

# Kitchen

- Arrange your kitchen so the things you use most frequently are easy to reach, preferably at waist level.
- Clean up spills as soon as they occur.
- Counters and tables need to be sturdy enough to support your weight if you lean on them.
- Wall ovens are preferable to a low oven.
- Where possible avoid carrying items when walking. A kitchen trolley may assist you.

# Bathroom & Toilet

- Non-slip flooring is recommended for bathrooms.
- Use a slip resistant mat in shower recess or bath.
- Handrails are recommended in and around the bath, shower and toilet.
- Use of a shower chair or stool in the shower can help prevent falls in the shower.
- When outside the shower cubicle for undressing, dressing or drying, sit on a stable chair.
- A raised toilet frame seat will assist getting on and off the toilet.
- Use liquid soap or soap on a rope.
- Remove the raised edge or lip, around the shower.
- Turn down the hot water service to 'warm'.
- An Occupational Therapist can advise you on modifications your home may require for maximum safety and other equipment. Please speak with an EPC staff member to make a request.



# Bedroom

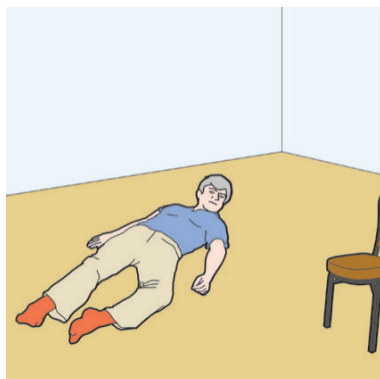
- Consider a light within easy reach of your bed eg. touch lamp or night light.
- Ensure your eyeglasses are within reach if you require them prior to getting up.
- Consider a telephone/mobile or personal alarm within easy reach.
- Keep bedroom floors free from clutter.
- Bed should be at a good height for getting on and off, a firm mattress makes getting out of bed easier.
- Ensure bed sheets/covers/quilts are free of the floor and not a trip hazard.
- Get out of bed slowly – sit for a short time before you stand up.
- Have your walking aid handy in case you need to get up in the night.
- Consult your palliative care nurse or Occupational Therapist if you are having difficulty getting into or out of your bed.

# Lounge

- Raised or higher chairs with solid armrests are easier to get in and out of.
- Keep phone (mobile or personal alarm) within easy reach.
- Remove furniture you do not require.
- Fans and heaters should not be in walkways or in the middle of the room.
- Move low furniture such as coffee tables to the edge of the room, not where you walk.



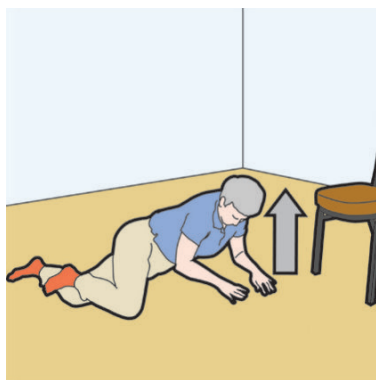
# How to get up safely from the floor



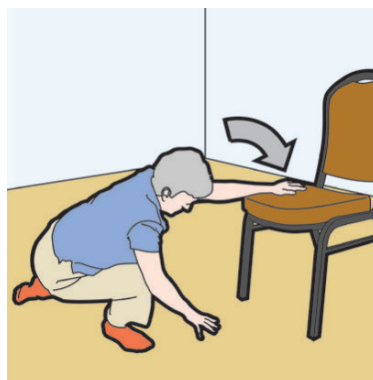
1. Turn onto your back.



2. Roll onto your side.



3. Push onto your hands.  
Now, push up onto your  
hands and knees.

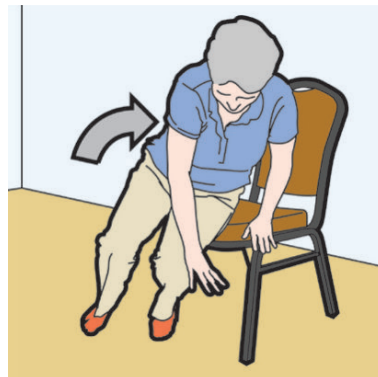


4. Kneel, using stable  
furniture to **STEADY**  
yourself.





**5. Place your strongest leg forward.**



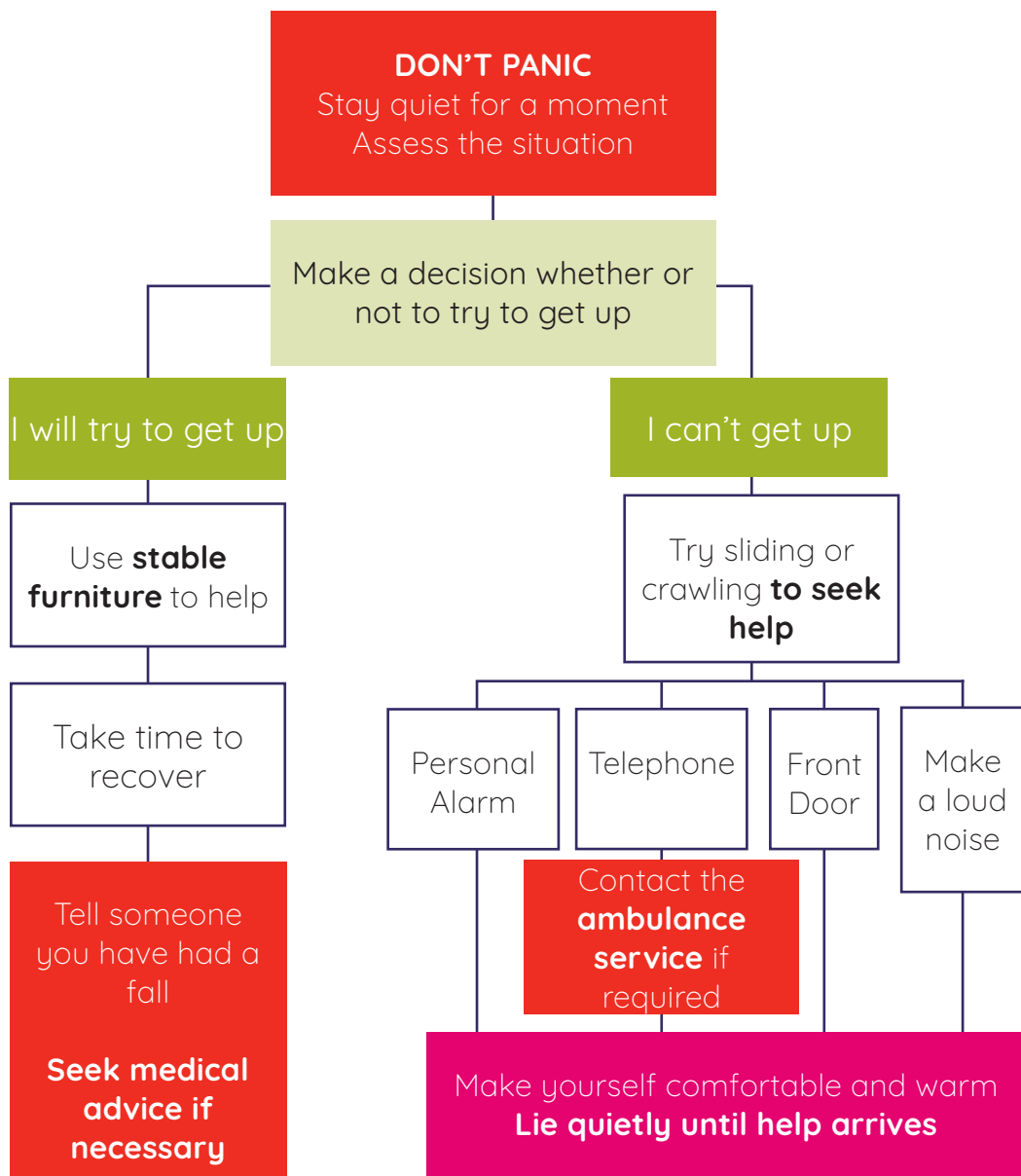
**6. Stand up.**



**7. Sit down. REST. TELL someone you have fallen!**

\*Images courtesy of Philips Lifeline. Lifeline services are not available in Australia at the time.

# What to do if you fall at home



# References

Australian Commission on Safety and Quality in Healthcare [2009], **Preventing Falls and Harm from Falls in Older People, Best Practice Guidelines for Australian Community Care**, Retrieved from <http://www.safetyandquality.gov.au/wp-content/uploads/2012/01/Guidelines-COMM.pdf>

Australian Government Department of Health and Ageing [2011], **Don't Fall For It - A Guide to Preventing Falls for Older People**, Retrieved from [http://www.health.gov.au/internet/main/publishing.nsf/Content/E23F5F7BF8F07264CA257BF0002043F5/\\$File/Don't%20fall%20for%20it.pdf](http://www.health.gov.au/internet/main/publishing.nsf/Content/E23F5F7BF8F07264CA257BF0002043F5/$File/Don't%20fall%20for%20it.pdf)

Baker, D. [2010] **Collaboration for Fall Prevention**, Retrieved from <https://www.lifeline.philips.com/content/dam/PLL/PLL-B2C/PDFs/How-to-Get-Up-From-a-Fall.pdf>

Department of Veterans Affairs USA [2014], **Fall Prevention at Home**, Retrieved from [http://www.patientsafety.va.gov/docs/fallsToolkit/fall\\_prevention\\_at\\_home.pdf](http://www.patientsafety.va.gov/docs/fallsToolkit/fall_prevention_at_home.pdf)

Victorian Government Health information [2011], **Falls are Preventable**, Retrieved from [http://www.health.vic.gov.au/agedcare/maintaining/falls\\_dev/Section\\_a1b.htm](http://www.health.vic.gov.au/agedcare/maintaining/falls_dev/Section_a1b.htm)

Queensland Government: Queensland Health [2008], **Stay on your Feet: Community Good Practice Guidelines**, Retrieved from [http://www.health.qld.gov.au/stayonyourfeet/documents/33383\\_a.pdf](http://www.health.qld.gov.au/stayonyourfeet/documents/33383_a.pdf)

# Acknowledgements

EPC staff, volunteers and clients.

# Stay connected with EPC



Subscribe via our website for news, events, fundraising activities and to receive our quarterly e-newsletter.

You can also like us on Facebook **@epcaus**, follow us on Twitter **@epcaus**, connect with us on LinkedIn **EPC (Eastern Palliative Care)** or subscribe to our YouTube channel **EPC (Eastern Palliative Care)**.



ST VINCENT'S  
HOSPITAL  
MELBOURNE

Eastern Palliative Care is a partnership between the Order of Malta, Outer East Palliative Care Service Inc. and St Vincent's Hospital (Melbourne) Ltd



Eastern Palliative Care acknowledges the support of the Victorian Government

Copyright © 2018 Eastern Palliative Care  
December 2018



Palliative care. Living well every day.